



CONSEIL CONSULTATIF POUR
LES EAUX OCCIDENTALES
SEPTENTRIONALES

**NORTH WESTERN
WATERS**
ADVISORY COUNCIL

CONSEJO CONSULTIVO PARA
LAS AGUAS
NOROCCIDENTALES

WORKING GROUP 3 - CHANNEL

—
13 March 2024

Agenda

11:00 – 11:10

1. Welcome and introductions

- Welcome from the Chair (Manu Kelberine)
- Apologies
- Adoption of the agenda
- Action points from the last meeting (13 September 2023)

11:10 – 12:00

2. Scallop management

- a. Presentation on Irish trials result (Daragh Browne, BIM)
- b. Organisation of workshop in 2024/2025 (to be confirmed)

12:00 – 12:20

3. NWW MS proposal for exemption for lemon sole in 7d

12:20 – 12:40

4. UK MPAs

12:40 – 12:50

5. Red mullet – update by CNPMEM

12:50 – 12:55

6. AOB

12:55 – 13:00

7. Summary of actions agreed and decisions adopted by the Chair



Action points from the last meeting

1. The CNPMEM will get in touch with the Secretariat following the meeting in France on red mullet with an updated proposal.
2. Inputs from members on the choke risks will be collated by the Secretariat and reviewed by the Focus Group Landing Obligation to prepare advice. The Secretariat will share an updated version of the spreadsheet with members for further comments if necessary.
3. Members to send comments on FMPs to Secretariat by 20 September. One response to be prepared for Seabass/Channel demersal non-quota species/Southern North Sea and eastern Channel mixed flatfish, and one additional each on scallops and whelk.
4. Secretariat to draft a letter on impacts of UK HMPAs to the Commission.





2. Scallop management

- Presentation by BIM on Irish trials
- Organisation of workshop in 2024/2025 – update by Secretariat



Trial to support Irish Industry in assessing scallop size selectivity in the English Channel



Trial vessel



Fishing gear

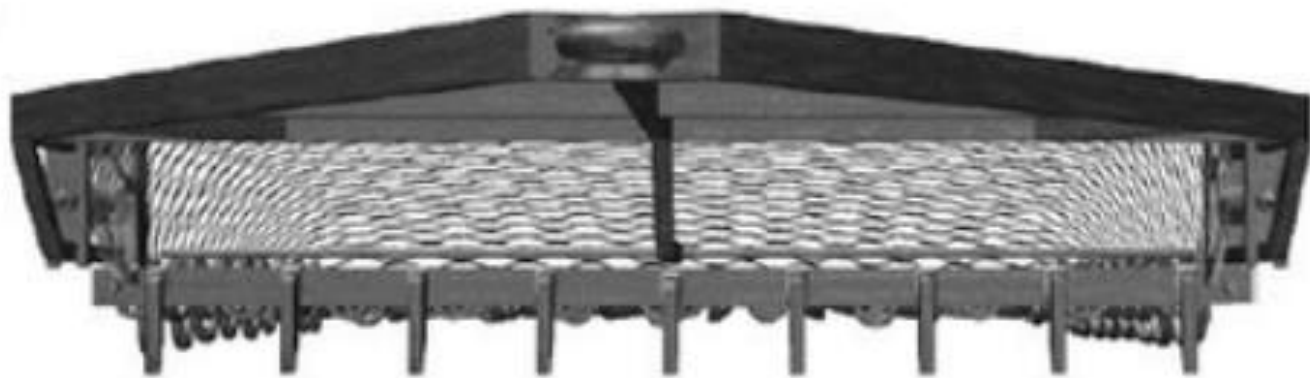
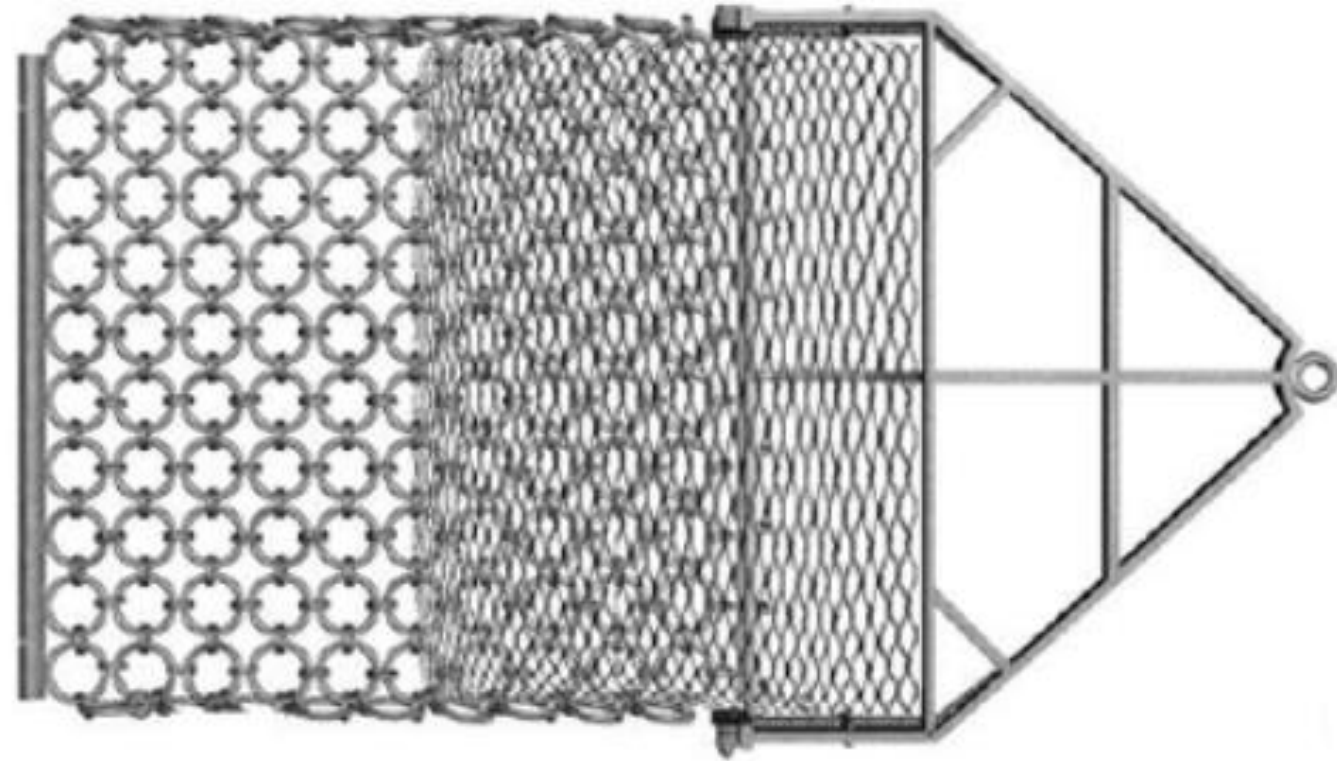
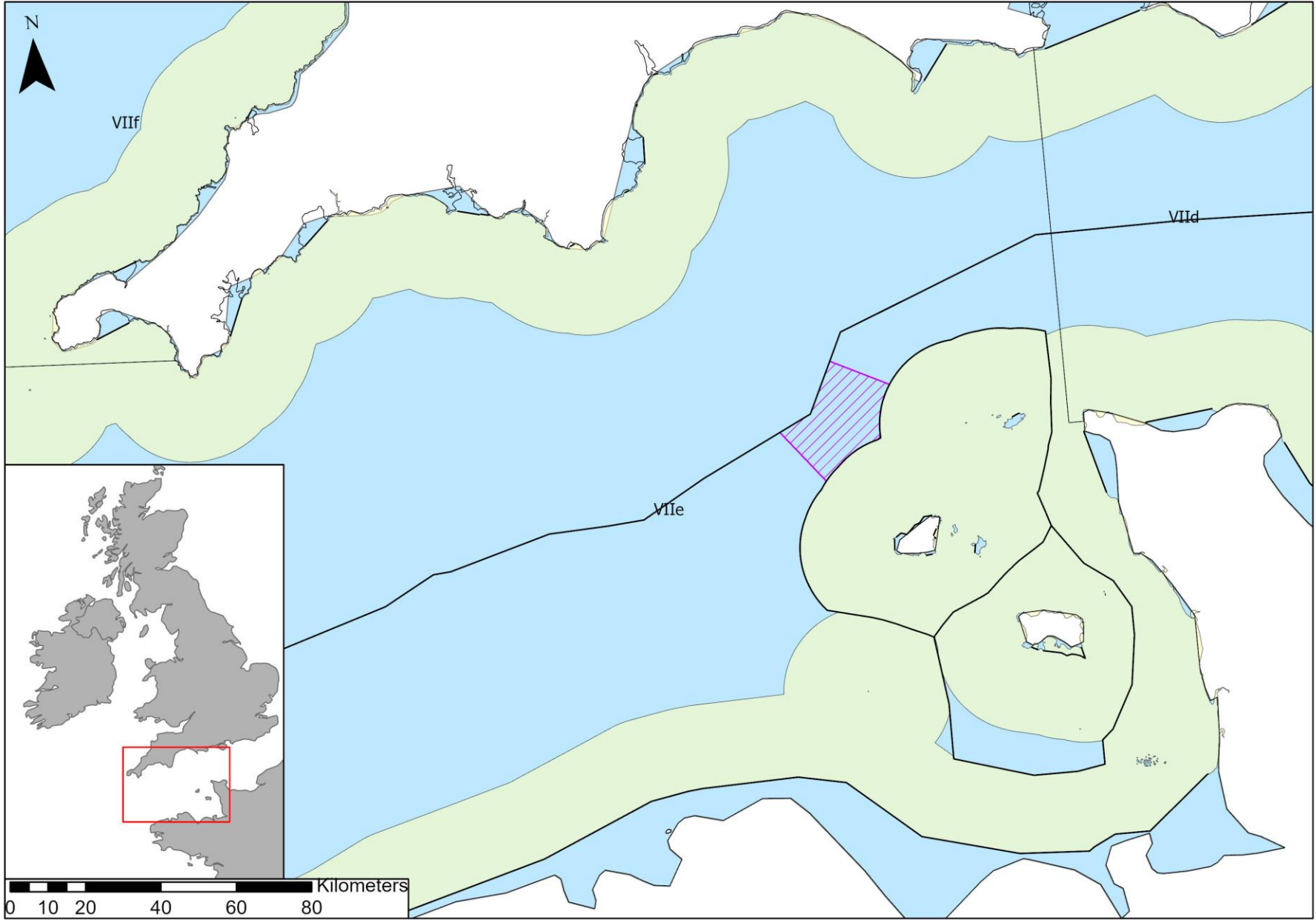
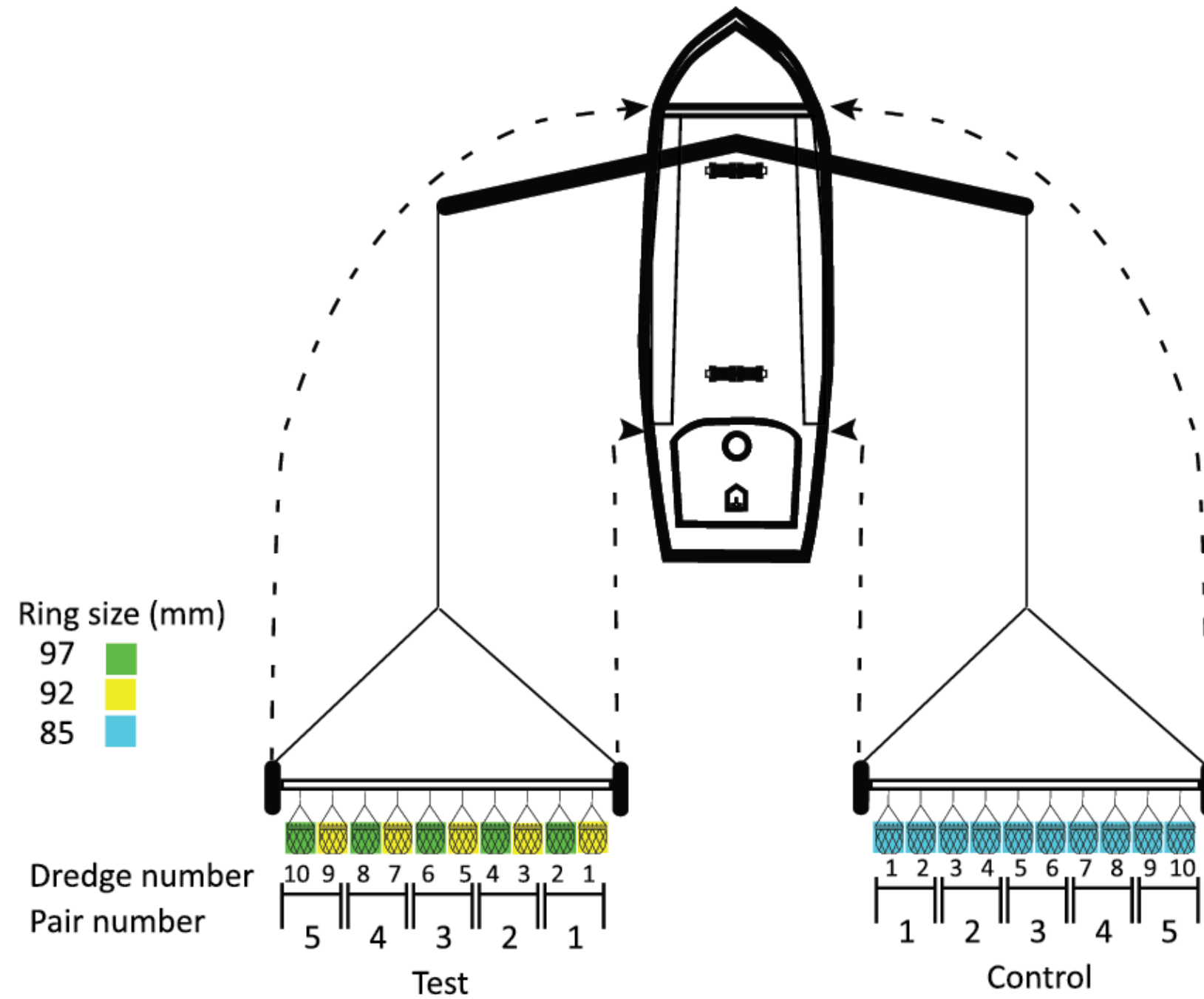


Image source: Boulcott, P., McLay, H.A., Allen, L. and Clarke, S., 2012. Scallop abundance in the Lamlash Bay No Take Zone: a baseline study. *Scottish Marine and Freshwater Science*, 3(7).

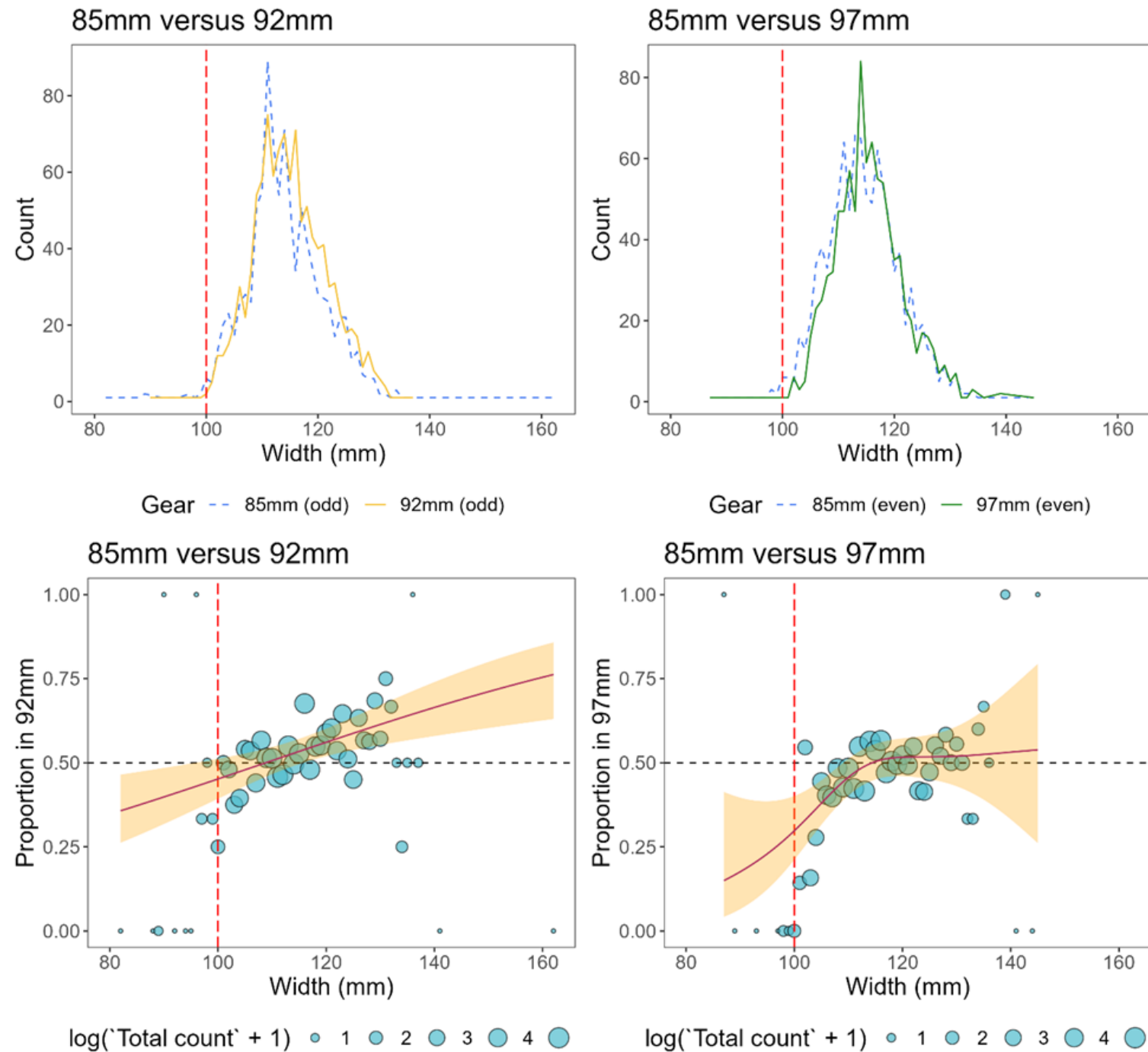
Trial details



Trial location and experimental design



Results



Key findings:

- Significant reduction in $<$ MCRS (100 mm) scallops in 92 mm ring size.
- No loss of \geq MCRS scallops using 92 mm
- Significant loss in \geq MCRS scallops in 97 mm.

Conclusions

Our sampling protocol attempted to account for differences in dredge fishing power along a beam. It was impossible to change the ring bags from one beam to another to assess differences in fishing power due to poor weather.

The trial Skipper kept the 92 mm gear on board his vessel after the trial and reported some loss of above 100 mm MCRS scallops as the gear became more worn.

These caveats aside the results are similar to the findings of a French study conducted in the eastern Channel (ICES 7.d) (SELEDRAG, Fouchet et al., 2019).

Report is available for download at:

<https://bim.ie/wp-content/uploads/2024/02/Scallop-Ring-Size-Trial-Report-2024.pdf>

Acknowledgments

Thanks to Margaret, Joseph and Ciaran Whelan of the MFV Willie Joe, John Lynch of the ISEFPO and John Harrington of JSD Marine Services.

This work was authorised by the Irish Department of Agriculture, Food and the Marine; funded by the Irish Government; and part-financed by the European Union through the EMFAF Operational Programme 2021 – 2027.



Rialtas na hÉireann
Government of Ireland



Arna chomhchistiú ag
an Aontas Eorpach

Co-Funded by the
European Union





2. Scallop management

- Presentation by BIM on Irish trials
- Organisation of workshop in 2024/2025 – update by Secretariat



3. NWW MS proposal for exemption for lemon sole in 7d

- Draft Joint Recommendation shared with members on 5 March
- TAC alignment with UK – risk of choke
- Proposal for a de minimis exception for lemon sole for beam trawlers in ICES areas 4 and 7d



4. UK MPAs

- New MMO byelaw announced on 31 Jan – Marine Protected Areas Bottom Towed Fishing Gear Byelaw to come into effect on 22 March 2024
- It will prohibit bottom towed gear in 13 MPAs
- MMO meeting 29 January with non-UK stakeholders
- Call for evidence until 13 February
- From Inter-AC Brexit Forum on 5 February:
 - ACs to consider providing input to the Commission on the 13 MPAs and sandeel closure to be implemented by the UK.
 - MS and diverse EU entities submitted strong contributions to the call for evidence
 - The Commission's legal unit was asked how apparent disproportion would be dealt with.

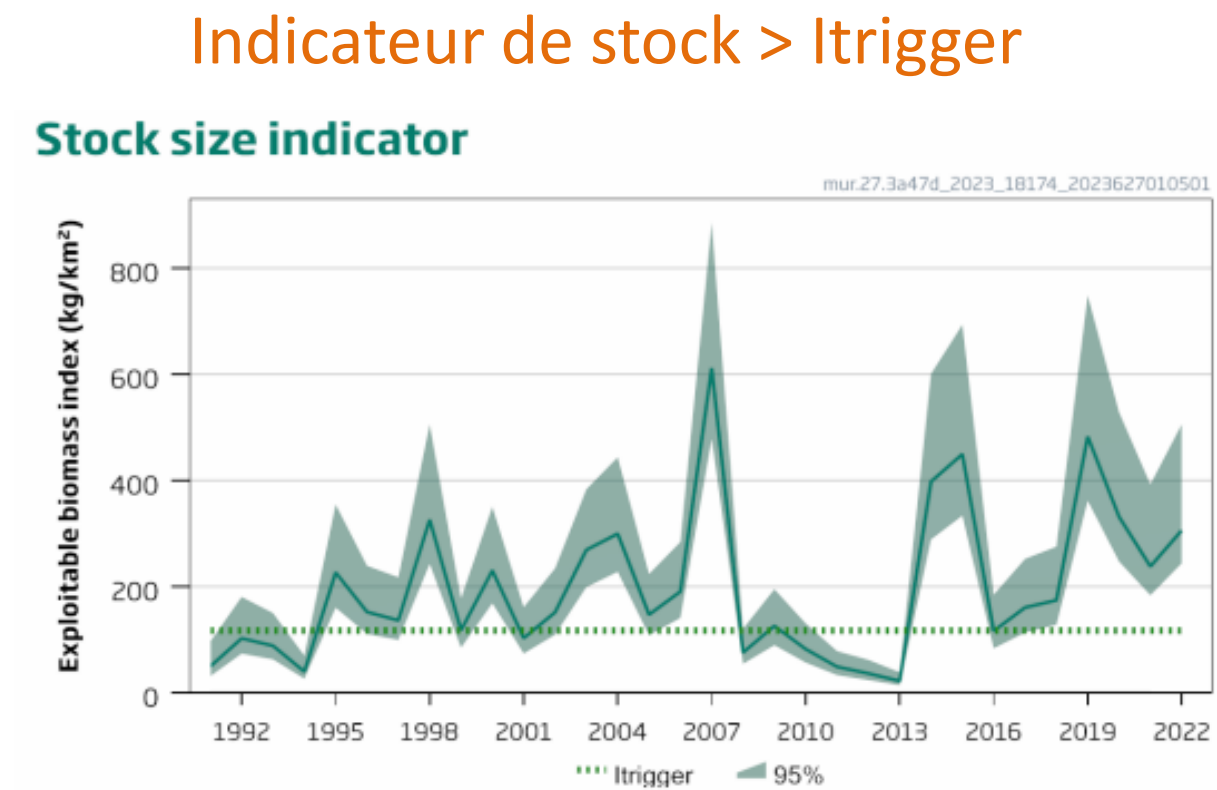
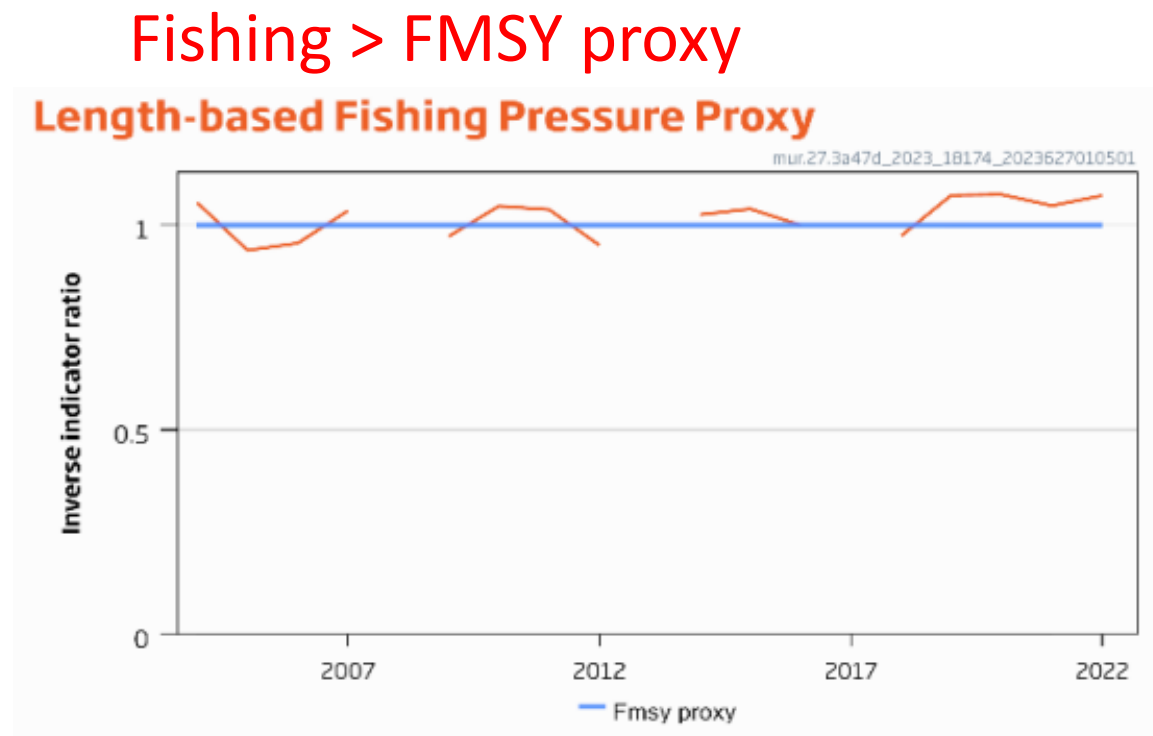




5. Red mullet – presentation by Anais Mourtada, CNP MEM

Proposition de gestion du rouget barbet

- Présentation de l'état du stock : Stock DLS (catégorie 3)

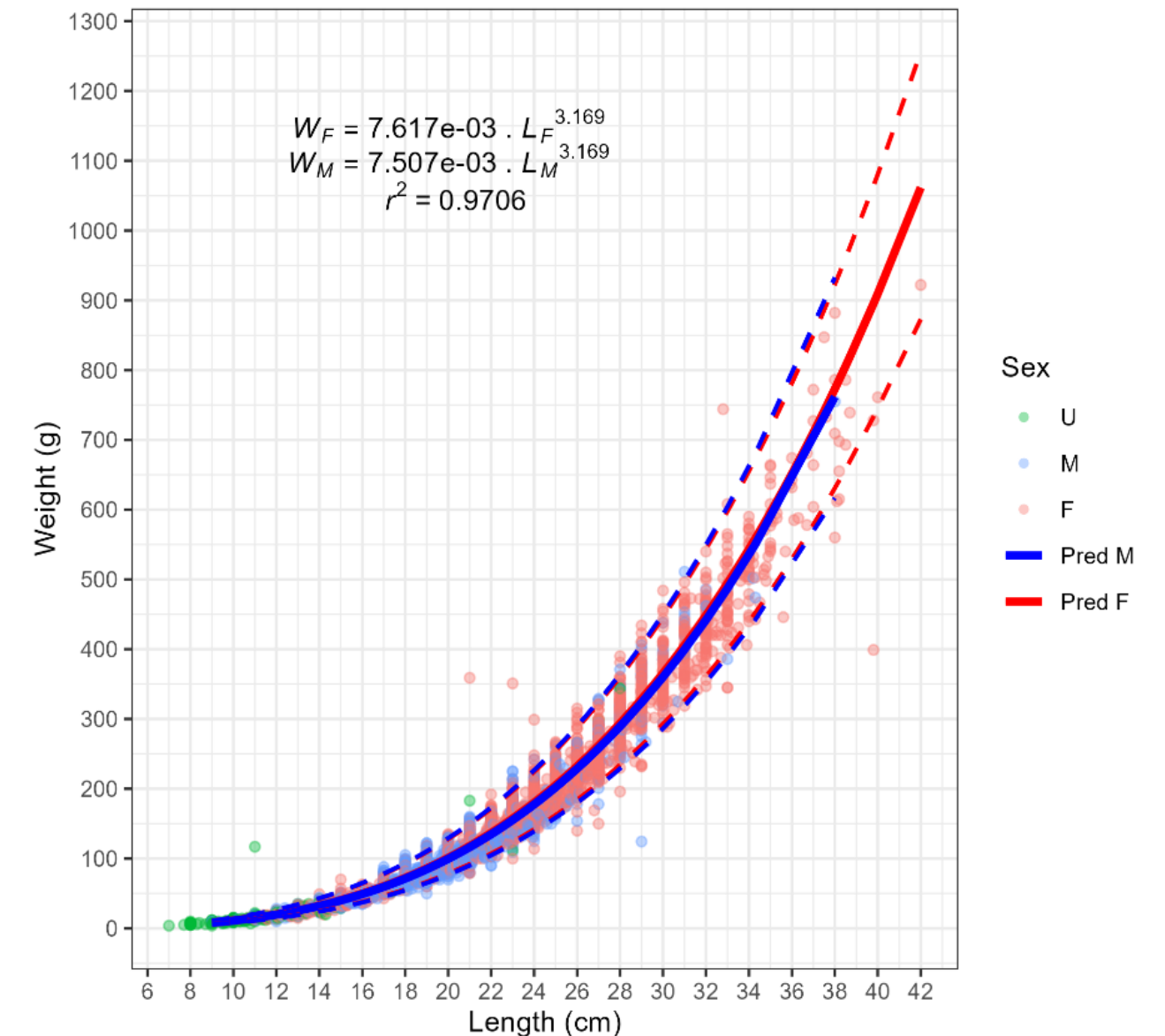


➔ Stock considéré comme surexploité

Proposition de gestion du rouget barbet

Biologie de l'espèce

- Taille de maturité sexuelle :
 - Femelle : 16,9 cm
 - Mâle : 16,2 cm
- Incitation à utiliser le poids de maturité des individus femelles au 3^{ème} trimestre (après reproduction) soit 67,2 g = 16,9 cm.



Proposition de gestion du rouget barbet

Présentation des flottilles

- Pêcheries françaises : En mer du Nord et en Manche, environ 350 chalutiers de fond peuvent capturer du rouget barbet
 - Selon les observations en mer : Les principaux individus débarqués sont de petits calibres
 - Selon les données de vente : Il y a une faible valorisation des captures

Document qui serait à compléter par les autres flottilles

Proposition de gestion du rouget barbet

Proposition de mesures techniques à mettre en place en mer du Nord et en Manche :

– Maillages :

- Passage au 80 mm pour l'ensemble des navires européens utilisant des engins trainants dans la zone ;
- Réflexion à lancer sur une augmentation de la taille de maillage en 4c, 7d ;

– Mise en place d'une TMRC à 17 cm

A dramatic sunset over the ocean. The sky is filled with dark, heavy clouds, with bright golden light breaking through from behind the sun, creating a silhouette of a fishing boat on the water in the foreground. The overall mood is serene and powerful.

6. AOB

7. Summary of actions agreed and decisions adopted by the Chair

