

Marine Protected areas in the Seas around Scotland



marinescotland



marinescotland
science

HISTORIC
SCOTLAND



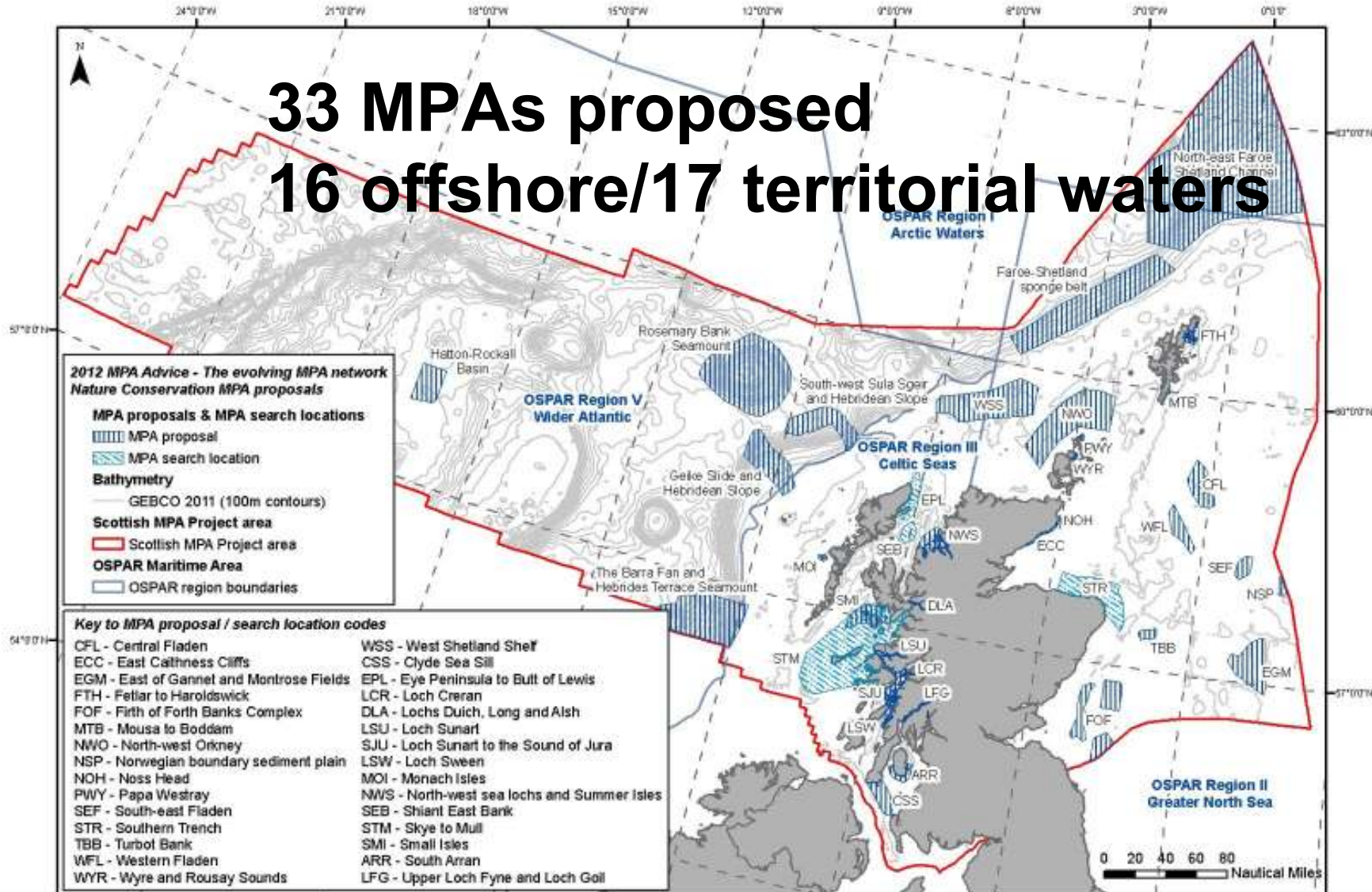
Purpose of this presentation

- Update since Paris meeting (January)
- Outline plans for consultation on possible Scottish MPAs
- Discuss the process used to develop management options
- Answer your questions



MPA Network Advice

33 MPAs proposed
16 offshore/17 territorial waters



Map projected in Europe Albers Equal Area Conic (Modified Standard Parallels - Standard Parallel 1 = 50.2; Standard Parallel 2 = 58.5). The exact limits of the UK Continental Shelf are set out in orders made under section 1(7) of the Continental Shelf Act 1964 (© Crown Copyright). Coastline © Crown copyright and database right (2012) All rights reserved. Ordnance Survey Licence number 100017908. Bathymetry © GEBCO. NOT TO BE USED FOR NAVIGATION. MPA network © BNH, JNCC and Marine Scotland. 07.12.12. All rights reserved.

Consultation on possible MPAs

- Possible Nature Conservation MPAs to be consulted on in **Summer 2013**
- Extended consultation period (**>12 weeks**)
- Pre-consultation engagement (**Spring 2013**)




Consultation materials

General

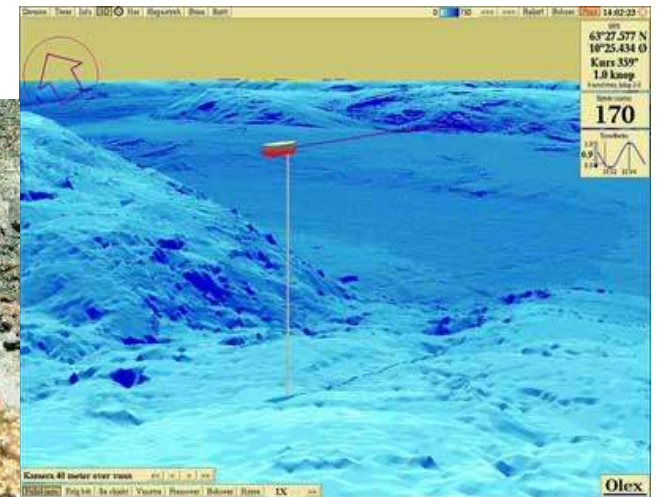
- Overview document
- Introduction to Management
- Strategic Environmental Assessment (MPA network)

For each site

- Site summary
 - Site selection information
 - Data confidence assessments
 - Impact assessment
 - **Management options paper**
- 

Purpose of management options papers

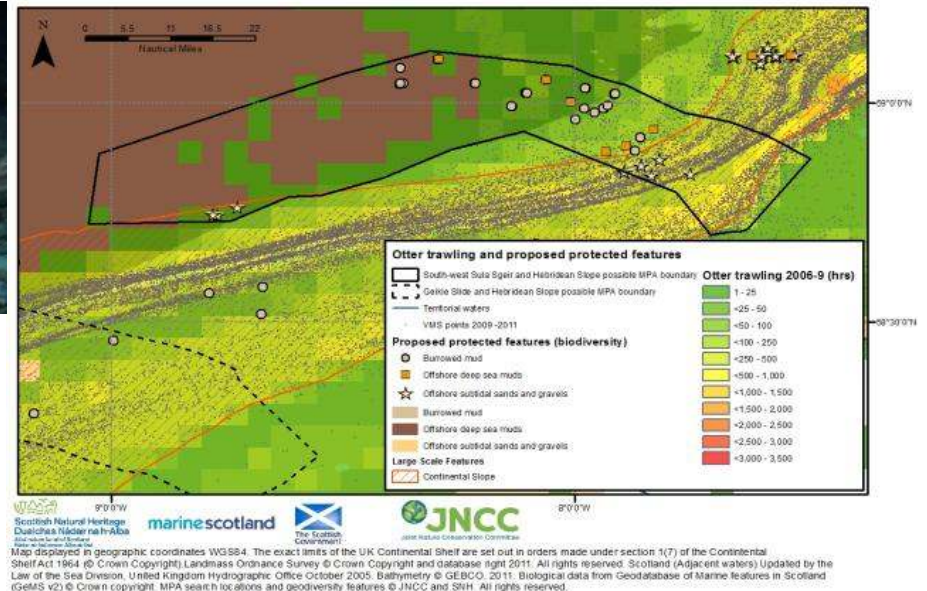
- Focus discussions with stakeholders
- Provide information on the evidence used
- Explore activities and interactions with features
- **Help develop management plan**



How have they been developed?

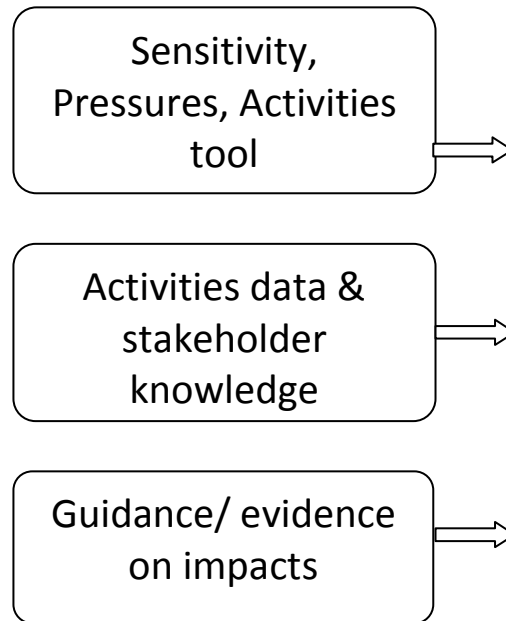
We considered:

- Overlap of activities and features
- Sensitivity of features to human activities
- Options for management
 - Based on **Risk** to achieving conservation objective

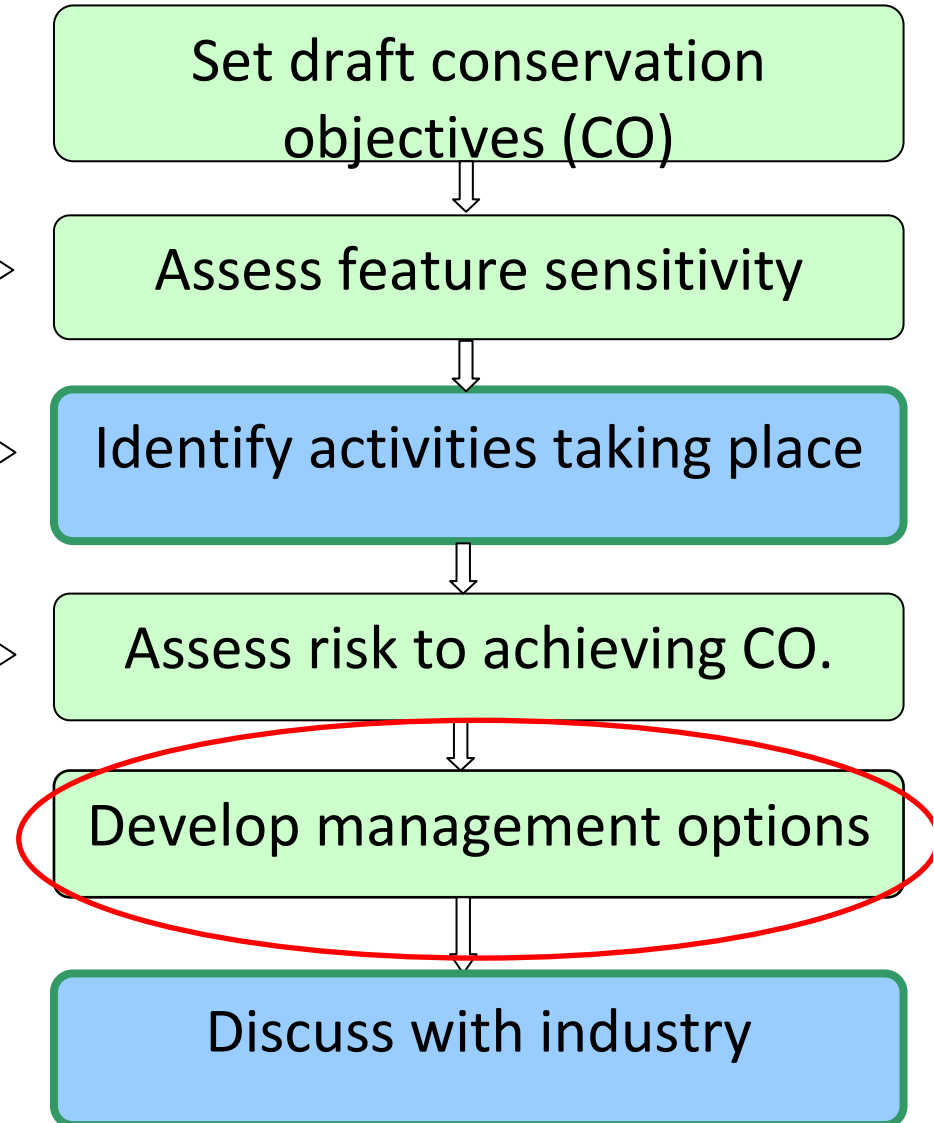


Process for developing management options

INPUTS



PROCESS



Marine Scotland lead
SNH and JNCC lead
Stakeholder input

Summary: Development of management options

JNCC has identified a range of management options that may be applied, including:

- **no additional management** required
- management to **reduce/limit** pressure
- management to **remove/avoid** pressure

Potential management to reduce/limit pressure

Potential measures could include:

- Area restrictions
- Temporal restrictions
- Seasonal restrictions
- Gear restrictions



Scottish MPA management


- The purpose of an MPA is not to restrict fishing!
Only where managing activity will help achieve conservation objective
- 0-6 nautical miles – Inshore Fisheries Act
- Outside 6 nautical miles – CFP measures

Next steps

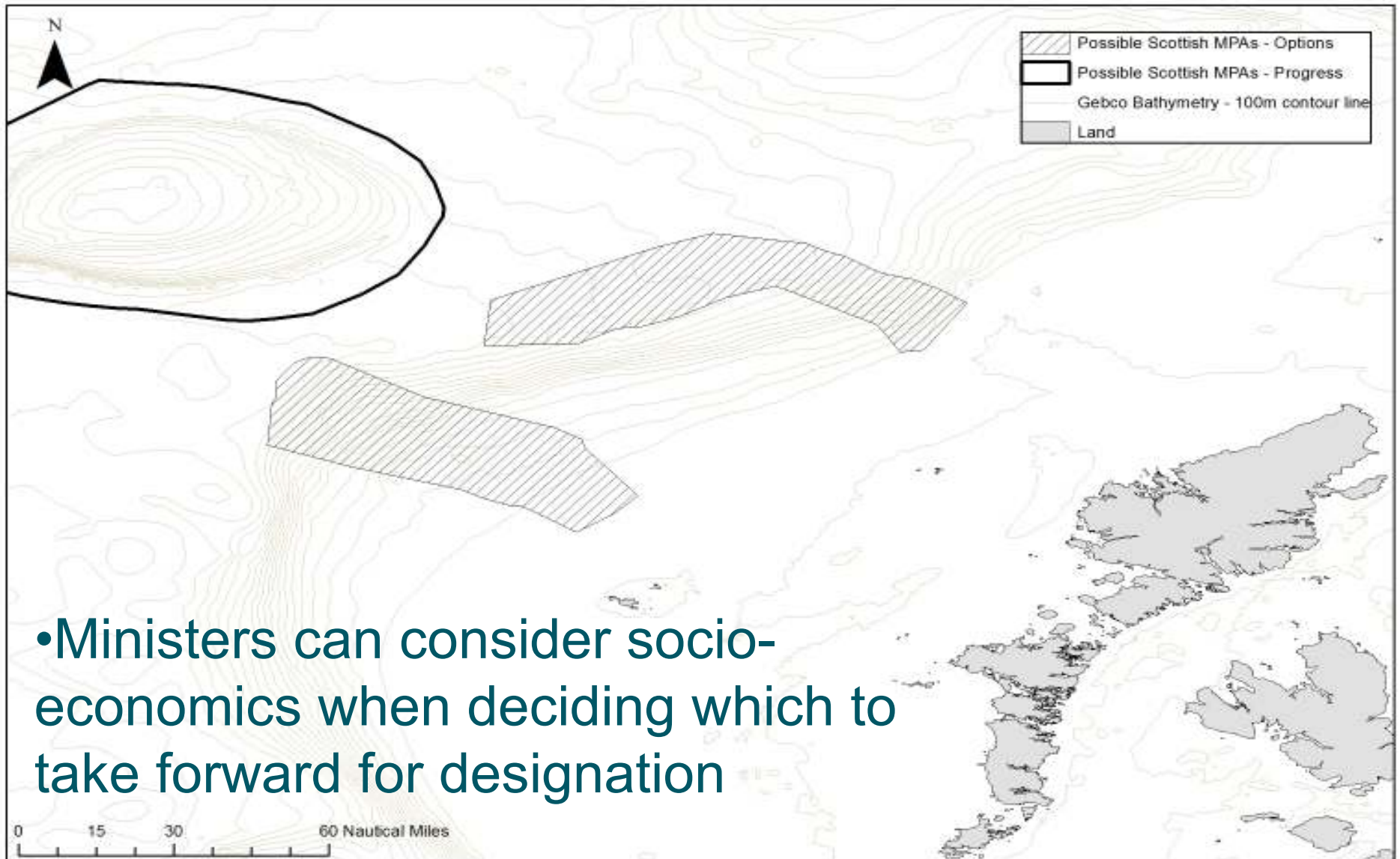
Preconsultation:

- Explain our approach
- What to expect from consultation
- Identify opportunities for further engagement

Consultation:

- Opportunities for further engagement
 - Seeking responses to the consultation package
 - Indication of preferences
- 
- A decorative graphic at the bottom of the slide consisting of two overlapping, wavy, horizontal bands. The upper band is a dark teal color, and the lower band is a light lime green color. Both bands have a soft, feathered edge and curve gently across the width of the slide.

Hebridean slope options



Options within the network

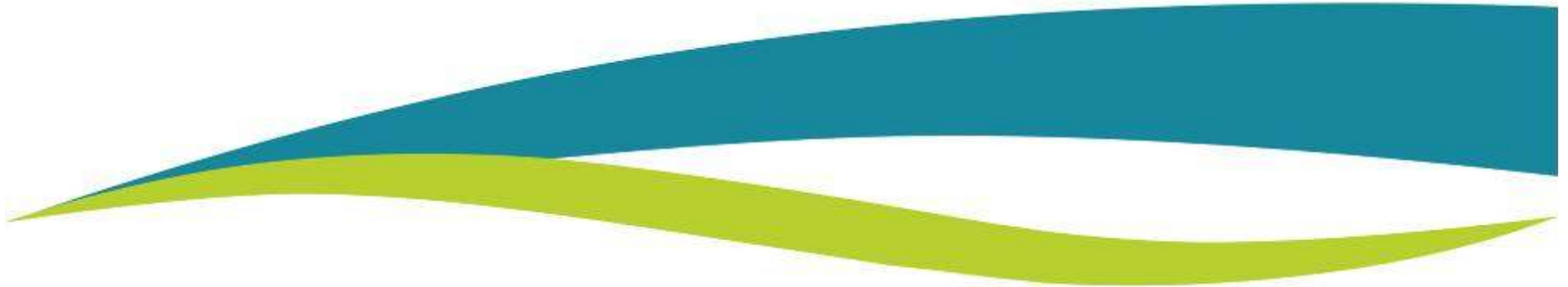
- 2x proposals along Hebridean Slope 'ecologically equivalent'
- Ministers can consider socio-economics when deciding which to take forward for designation
- Opportunity to identify a preference



Further information



- Marine Scotland website
www.scotland.gov.uk/marinescotland/mpanetwork
- Scientific queries relating to offshore
<http://jncc.defra.gov.uk/marineprotectedareas>
- Scientific queries relating to inshore
www.snh.gov.uk/marine-protected-areas





marinescotland



Scottish Government approach

- >12miles to 200miles/median line–CFP regulation
- Submission of management proposals by end 2014
- Measures in place by end 2016
- Meetings with industry – similar to Haig Fras/Stanton Banks pilot studies – Dates To Be Confirmed

Regional Management Workshops

- Fisheries management workshops
- Steps taken to identify fisheries management measures for the sites
 - Stakeholder input through workshop
 - CFP guidance on management in Natura sites;

Thank you for listening



Further information regarding MPA developments across the UK can be found on the JNCC website: www.jncc.defra.gov.uk/marineprotectedareas

Useful email addresses:

- Natura SCI information - <http://jncc.defra.gov.uk/page-4534>
- MCZ consultation - <http://www.defra.gov.uk/consult/2012/12/13/marine-conservation-zones-1212/>
- Marine Scotland webpage – www.scotland.gov.uk/marinescotland

Declan Tobin
Declan.tobin@jncc.gov.uk

